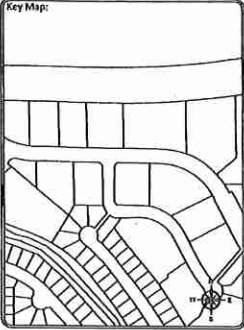


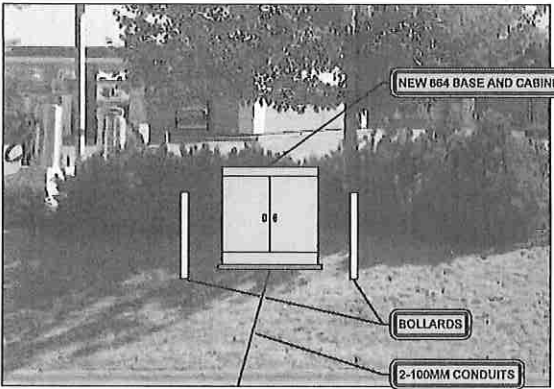
RECEIVED AND PROCESSED  
BY LAND DEVELOPMENT  
INITIALS: *[Signature]*  
APR 05 2017



Sheet Title:  
Design  
Function:  
Make ready Task:  
FDH Placement



- NOTES:
- 500 INSTALL 894F FDH ON CONCRETE PAD WITH 2x BOLLARS. SEE DETAIL 'C' SHEET 500
  - 501 STUB 2-100mm DUCTS 0.6m ABOVE FINISHED GRADE
  - 502 INSTALL (2) 100mm DBII PVC CONDUIT L= 16.0 m. SEE DETAIL 'B' SHEET 500
  - 503 CORE FOR 2-100mm CONDUIT IN TELUS MH-93 SEE DETAIL 'A' SHEET 500



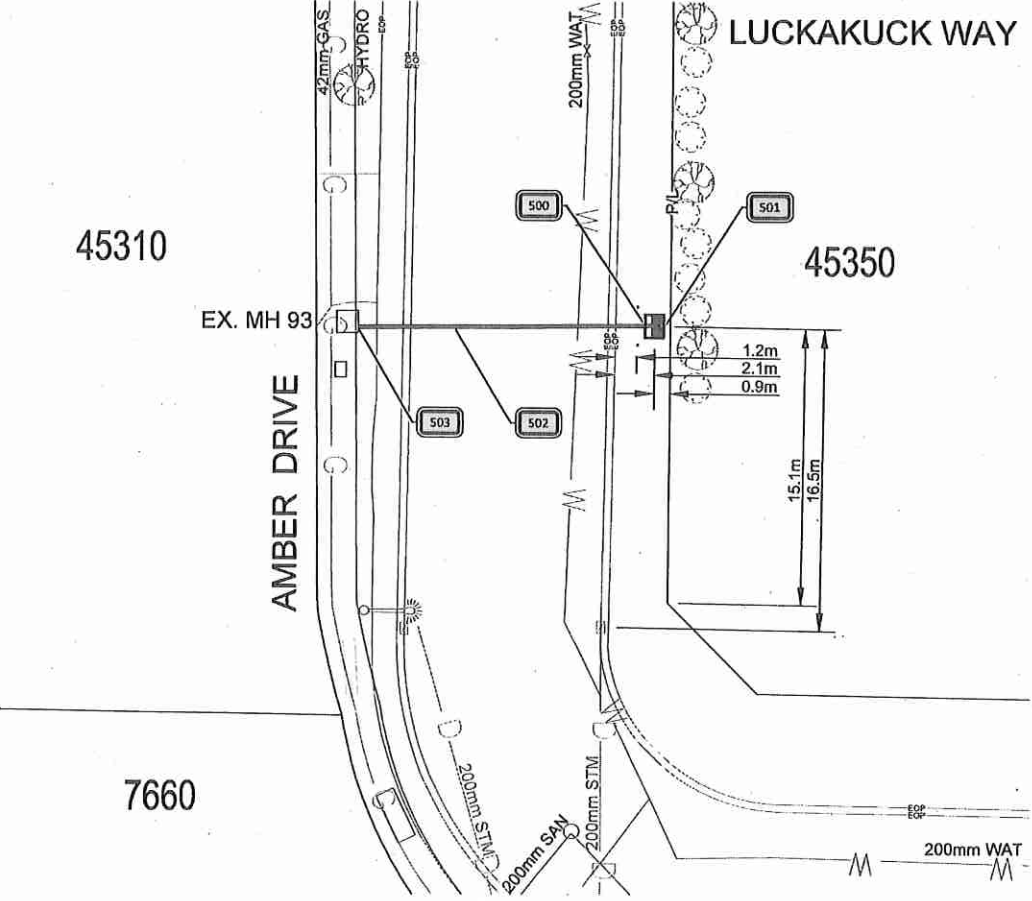
45350 LUCKAKUCK WAY  
FDH - SITE PLAN  
N.T.S.

CAUTION:  
GAS FACILITIES IN AREA  
LOCATE AND EXPOSE  
PRIOR TO COMMENCING WORK

METHOD OF PLACEMENT  
VIA OPEN TRENCH UNLESS  
OTHERWISE NOTED

LOCATE AND PROTECT ALL  
OTHER UTILITIES IN FIELD

ALL MEASUREMENTS ARE IN  
METERS UNLESS NOTED



PLAN VIEW  
HORIZONTAL SCALE: 1 : 250

45310

45350

AMBER DRIVE

LUCKAKUCK WAY

EX. MH 93

7660

DO ONE CALL  
CALL BEFORE YOU DIG  
1-800-485-5049  
OR BY CALLING 800  
WATERWORKS AREA 887-6849  
CALL AT LEAST TWO WEEKS BEFORE  
STARTING YOUR PLAN TO DIG

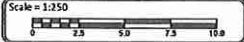
Client:  
*[Signature]* TELUS

Prepared By:  
**FAFL**  
SUITE 200 - 7485 130 ST  
Surrey BC V3W 1H8

Rev	Date	Notes	QC
-	-	-	-
-	-	-	-
-	-	-	-
-	-	-	-
-	-	-	-

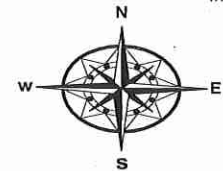
- IFP: March 16 2017 -  
DRAWN BY: JEC  
DESIGNED BY: KADTEC SYSTEMS

Proprietary Information  
Not for disclosure except under written agreement



Project:  
Falcon 2017  
SRDS 1042A - 2628975  
Sardis, BC

File Name:  
E01D Route  
SRDS 1042A  
Network Number  
2628975 Sheet Number  
600



**UNIVERSAL FLAGGING**

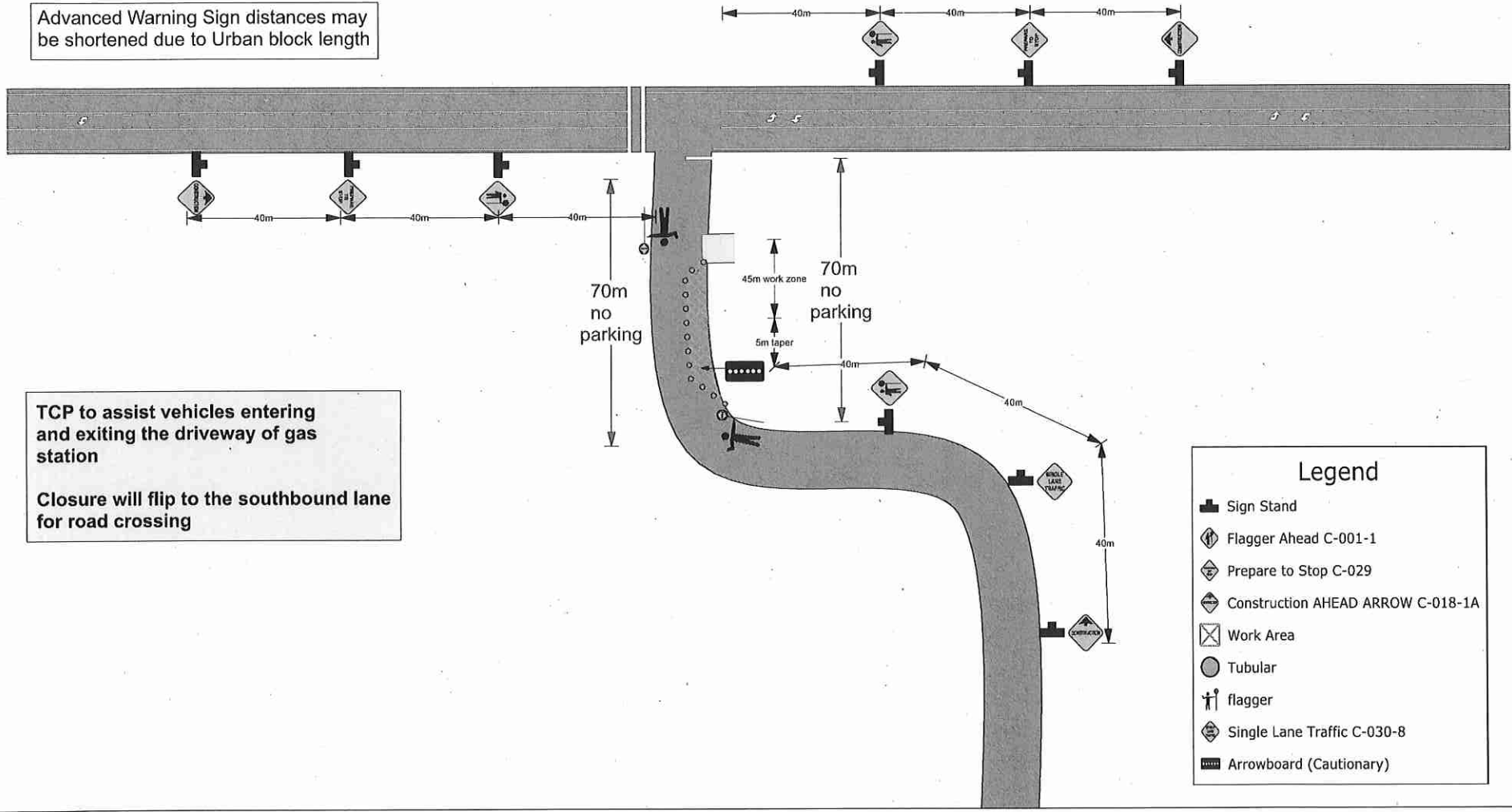
Date: July 12, 2017 Author: Kat McCawley 604-444-3732 ext 247 Project: SRDS 1042A-2628975 FDH  
 Universal Flagging: 170-8061 Loughheed Hwy. Burnaby, BC V5A 1W9 Office: 604-444-3732 Dwg: 001

Comments:

TELUS  
 Kelly Buchanan: 250-485-7330

City of Chilliwack  
 Job location: 45350 Luckakuck Way  
 Closure description: SLAT on Amber Dr  
 Tentative date and hours: July 31 - September 15, 2017  
 Job description: Civil Construction - New Conduit and pad construction for Fibre Distribution Hub Cabinet

Advanced Warning Sign distances may be shortened due to Urban block length



TCP to assist vehicles entering and exiting the driveway of gas station

Closure will flip to the southbound lane for road crossing

- Legend**
- Sign Stand
  - Flagger Ahead C-001-1
  - Prepare to Stop C-029
  - Construction Ahead Arrow C-018-1A
  - Work Area
  - Tubular
  - flagger
  - Single Lane Traffic C-030-8
  - Arrowboard (Cautionary)